



## Welcome to the Erickson Conservation Area

*"Argyle just gained a 220-acre park" -John Soper*

### *What can I do at the property?*

The Erickson Conservation Area is open to the public throughout the year for non-motorized uses like hiking, birding and wildlife viewing, fishing, hunting, trapping and skiing. Vehicles are not permitted.



### *What will I see there?*

You can enjoy a variety of settings, including open water, wetlands, Pecatonica River frontage, big oak trees, woodland, rock outcrops & grassland.

Wildlife is abundant! Cranes, songbirds, turtles, frogs, fox, butterflies and fish call this special place home.

### *How do I get there?*

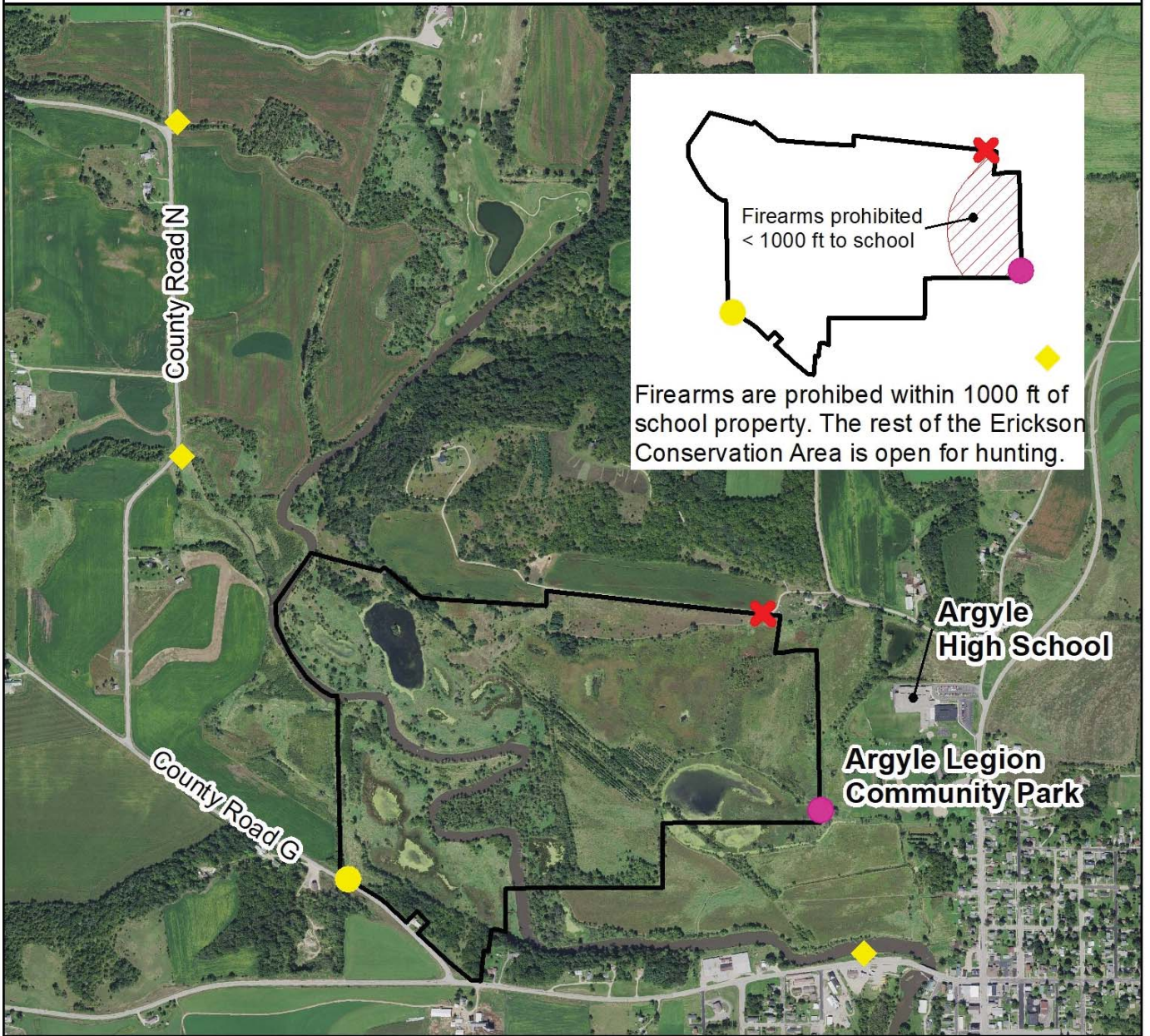
The main entrance to the property is from the Argyle Legion Community Park. From the parking lot, walk west across the mowed area to the kiosk. Follow the new boardwalk to the old field road and follow that to the railroad bed.



*Thank You* to those who made this community project possible: Alex and Mary Erickson, Knowles-Nelson Stewardship Fund, Paul E Stry and James E. Dutton Foundations, Community Foundation of Southern Wisconsin, AmeriCorps NCCC, and the Village, School and community members of Argyle! **Please contact us if you have any questions, comments or ideas.** (608) 930-3252, [info@driftlessconservancy.org](mailto:info@driftlessconservancy.org)



# Public Access Points



Firearms prohibited < 1000 ft to school

Firearms are prohibited within 1000 ft of school property. The rest of the Erickson Conservation Area is open for hunting.

<p><b>X</b> Private Driveway - No Public Access</p>	<p>0 250 500 1,000 1,500 2,000 Feet</p>	<p>N</p>
<p><b>●</b> Public Access</p>		
<p><b>●</b> Public Access - No Firearms Permitted</p>		
<p><b>◆</b> Public Access via Waterway</p>		
<p><b>▭</b> Erickson Conservation Area boundary</p>		